

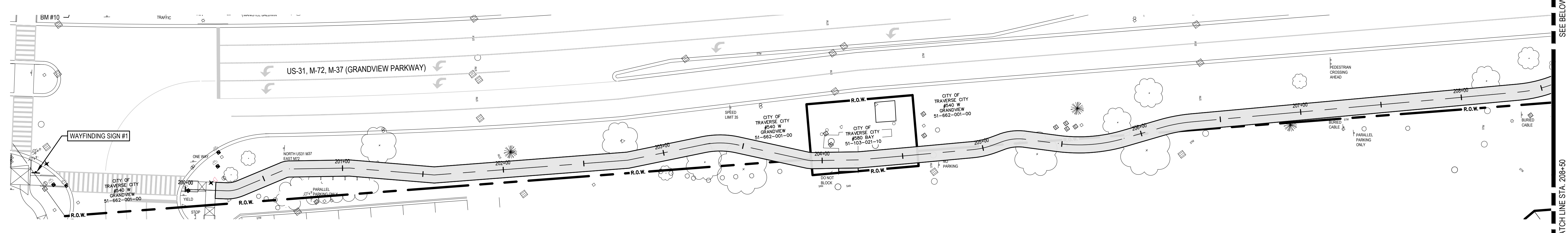
ISSUANCE & DATE:

01	03/14/23	PRELIMINARY
02	05/30/23	80% PLANS
03	08/04/23	90% PLANS
04	09/18/23	FINAL PLANS

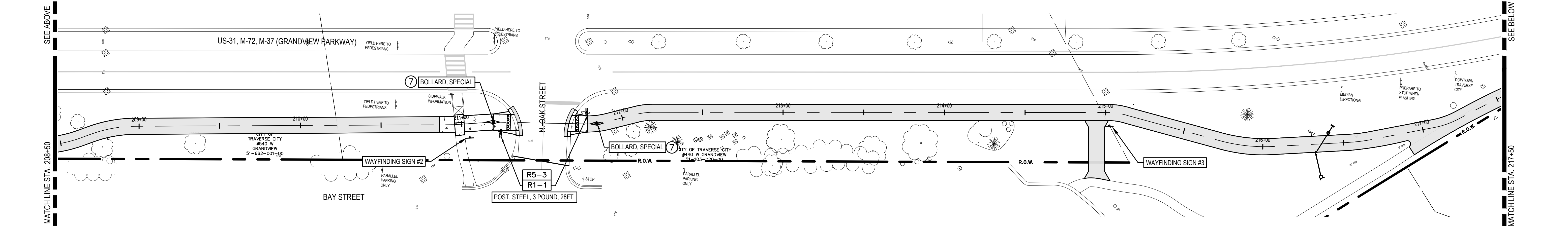
DATE: 03/01/2024
 PROJECT MANAGER: PCS
 PROFESSIONAL: PCS
 DRAWN BY: DDS
 CHECKED BY: JPM
 JOB NUMBER: 7473008

If this document is sealed and signed in a digital or electronic format and is received from someone other than the person who prepared it, you should contact the seal holder to verify the seal holder's authority to release the document. The seal holder's authority to release the document is limited to the specific project and shall not be construed as an endorsement or approval of the seal holder's work or the quality of the work. The seal holder shall not be held liable for any errors or omissions in the document or for any damage or loss resulting from the use of the document.

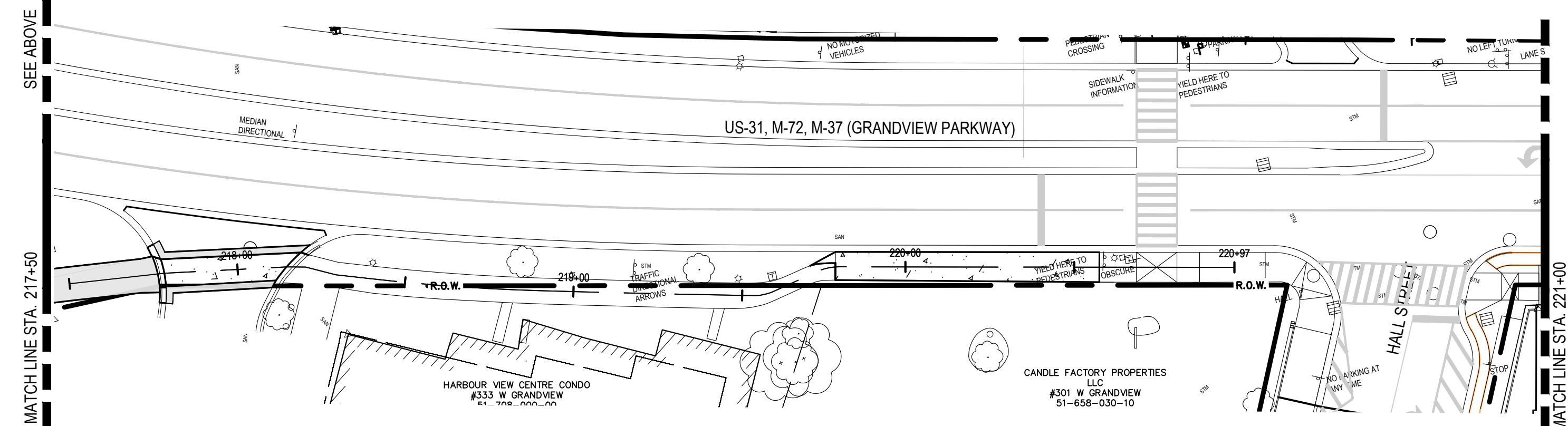
SIGNAGE & PAVEMENT MARKINGS
STA 200+00 - STA 220+79



SIGNAGE & PAVEMENT MARKINGS
STA: 200+00 - 208+50



SIGNAGE & PAVEMENT MARKINGS
STA: 208+50 - 217+50



SIGNAGE & PAVEMENT MARKINGS
STA: 217+50 - 220+79

SIGNAGE LEGEND

- R1-1 (18")
2.25 SFT SIGN, TYPE IIIA
14 FT 1-POST, STEEL, 3 LB
- R1-3P (24" X 8")
1.33 SFT SIGN, TYPE IIIA
- W11-2 (18")
2.25 SFT SIGN, TYPE IIIB
15 FT 1-POST, STEEL, 3 LB
- R5-3 (24")
4 SFT SIGN, TYPE IIIB
14 FT 1-POST, STEEL, 3 LB
- W16-7PL (24" X 12")
2 SFT SIGN, TYPE IIIB
- W16-7PR (24" X 12")
2 SFT SIGN, TYPE IIIB
- W5-4a (18" X 18")
2.25 SFT SIGN, TYPE IIIB
12 FT 1-POST, STEEL, 3 LB
- W16-2aP (18" X 9")
1.125 SFT SIGN, TYPE IIIB

STRIPING LEGEND

- ① PAVT MRKG, WATERBORNE, 4 INCH, YELLOW (DASHED)
- ② PAVT MRKG, POLYUREA, BIKE THRU ARROW SYM
- ③ PAVT MRKG, WATERBORNE, 12 INCH, WHITE
- ④ PAVT MRKG, WATERBORNE, 24 INCH, STOP BAR
- ⑤ PAVT MRKG, WATERBORNE, 4 INCH, WHITE (SOLID)
- ⑥ PAVT MRKG, WATERBORNE, 24 INCH, CROSSWALK
- ⑦ PAVT MRKG, WATERBORNE, 4 INCH, YELLOW

SHEET QUANTITIES

PAY ITEM	DESCRIPTION	QUANTITY	UNITS
8100371	POST, STEEL, 3 POUND	28	FT
8100404	SIGN, TYPE IIIA	5	SFT
8100405	SIGN, TYPE IIIB	8	SFT
8107050	SIGN, WAYFINDING	3	EA
8107050	BOLLARD, SPECIAL	2	EA
8110232	PAVT MRKG, WATERBORNE, 4 INCH, YELLOW	34	FT

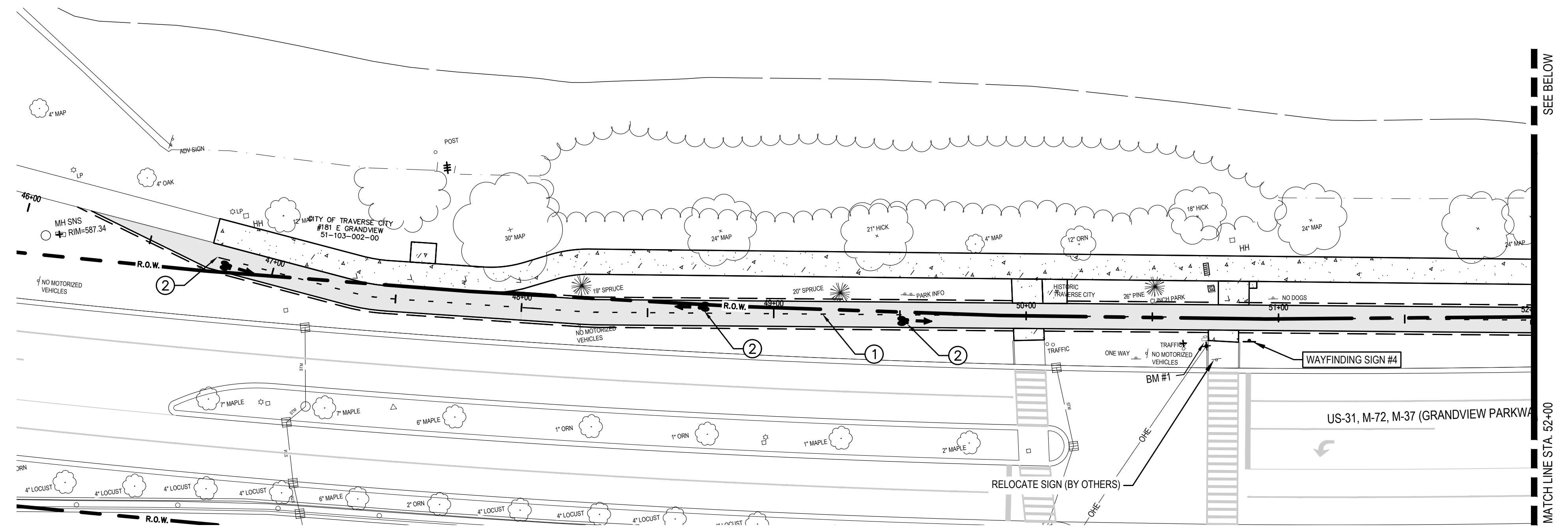
SIGNAGE & PAVEMENT MARKINGS SHEET NOTES

- WAYFINDING SIGNAGE TO FOLLOW TART TRAIL, INC. DESIGN GUIDELINES. SEE SHEET 24 FOR DETAILS.
- RELOCATION OF EXISTING WAYFINDING SIGNS AND POSTS SHALL BE COORDINATED WITH TART TRAILS.
- IT IS THE CONTRACTOR'S RESPONSIBILITY TO SALVAGE, STORE, AND RESET SIGNS AND POSTS IDENTIFIED TO BE RELOCATED.

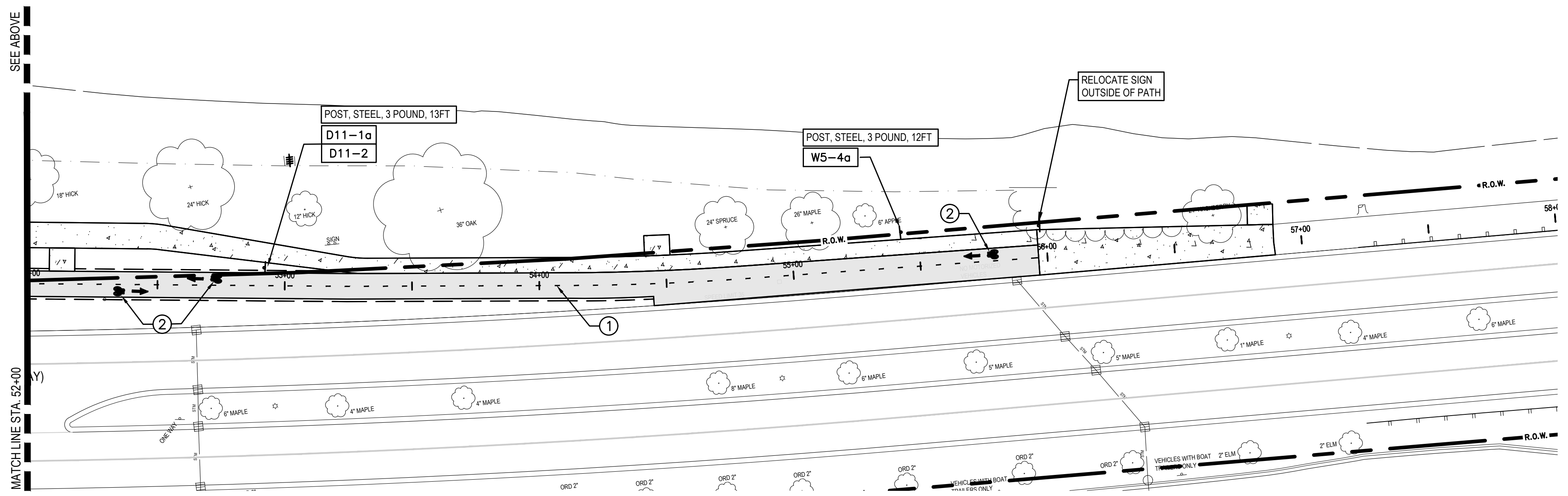
BENCHMARKS:

BENCHMARK #10 ELEV. 587.61
 TOP OF NW BOLT TO TRAFFIC SIGNAL N. SIDE OF GRANDVIEW PARKWAY NW QUADRANT OF N. DIVISION STREET AND GRANDVIEW PARKWAY

3/10/2024, 1:09:41 PM
 P:\202403\7473008\Bldg\2_Signs\Tart\Division to Hall Street - Signage and Pavement Markings.dwg vended
 THIS DOCUMENT HAS BEEN PREPARED BY PROGRESSIVE AE AS AN INSTRUMENT OF SERVICE, AND PROGRESSIVE AE SHALL RETAIN ALL COMMON LAW, STATUTORY AND OTHER RESERVED RIGHTS, INCLUDING THE COPYRIGHT THEREIN.



SIGNAGE & PAVEMENT MARKINGS
STA: 46+00 - 52+00
 1"=30' 0 30'
 NORTH



SIGNAGE & PAVEMENT MARKINGS
STA: 52+00 - 57+00
 1"=30' 0 30'
 NORTH

SIGNAGE LEGEND

- R9-6 (12" X 18")
1.5 SFT SIGN, TYPE III B
13 FT 1-POST, STEEL, 3 LB
- D11-1 (24" X 18")
3 SFT SIGN, TYPE III A
13 FT 1-POST, STEEL, 3 LB
- R5-3 (24")
4 SFT SIGN, TYPE III B
14 FT 1-POST, STEEL, 3 LB
- D11-2 (18" X 18")
2.25 SFT SIGN, TYPE III A
13 FT 1-POST, STEEL, 3 LB
- W5-4a (18" X 18")
2.25 SFT SIGN, TYPE III B
12 FT 1-POST, STEEL, 3 LB

STRIPING LEGEND

- ① PAVT MRKG, WATERBORNE, 4 INCH, YELLOW (DASHED)
- ② PAVT MRKG, POLYUREA, BIKE THRU ARROW SYM
- ③ PAVT MRKG, WATERBORNE, 12 INCH, WHITE
- ④ PAVT MRKG, WATERBORNE, 24 INCH, STOP BAR
- ⑤ PAVT MRKG, WATERBORNE, 4 INCH, WHITE (SOLID)
- ⑥ PAVT MRKG, WATERBORNE, 24 INCH, CROSSWALK
- ⑦ PAVT MRKG, WATERBORNE, 4 INCH, YELLOW

SHEET QUANTITIES

PAY ITEM	DESCRIPTION	QUANTITY	UNITS
8100371	POST, STEEL, 3 POUND	25	FT
8100404	SIGN, TYPE III A	6	SFT
8100405	SIGN, TYPE III B	3	SFT
8110232	PAVT MRKG, WATERBORNE, 4 INCH, YELLOW	822	FT
8112170	PAVT MRKG, POLYUREA, BIKE THRU ARROW SYM	5	EA

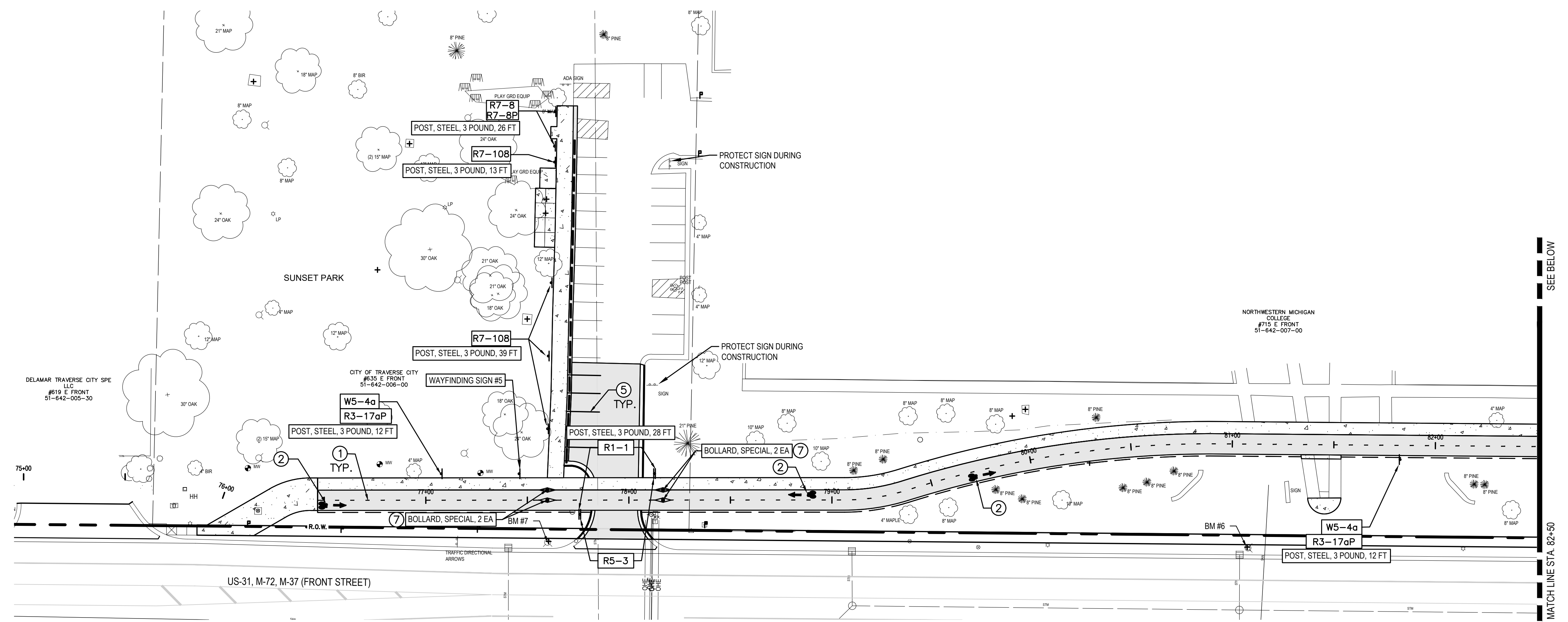
SIGNAGE & PAVEMENT MARKINGS SHEET NOTES

- WAYFINDING SIGNAGE TO FOLLOW TART TRAIL, INC. DESIGN GUIDELINES. SEE SHEET 24 FOR DETAILS.
- ANY ADDITIONAL SIGNAGE THAT NEEDS TO BE ADJUSTED MUST GO THROUGH THE FIELD ENGINEER AND CITY.

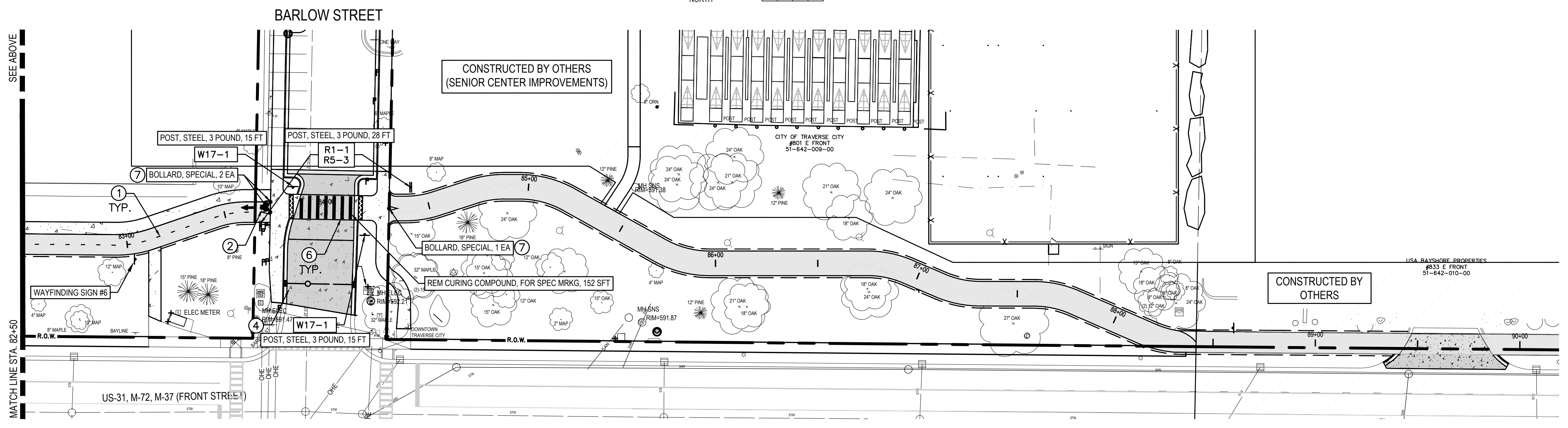
BENCHMARKS:

- BENCHMARK #1 ELEV. 589.43
TOP OF NNW BOLT TO TRAFFIC POLE N. SIDE GRANDVIEW PARK BOULEVARD CENTERLINE EXTENDED OF PARK STREET.
- BENCHMARK #2 ELEV. 587.18
TOP OF SE FLANGE BOLT TO HYDRANT UNDER "M" OF MADE W. OF SPLASH PAD BUILDING
- BENCHMARK #9 ELEV. 590.25
PK NAIL IN CONCRETE 100± S. OF BRIDGE IN TART TRAIL WHERE PATH LEADS UNDER BRIDGE ARROW

3/1/2024, 1:53:22 PM
 P:\20240303\Bills\Phase 1 - Street Parks to Senior Center\1 - Signage and Pavement Markings.dwg, unvisited
 THIS DOCUMENT HAS BEEN PREPARED BY PROGRESSIVE AE AS AN INSTRUMENT OF SERVICE, AND PROGRESSIVE AE SHALL RETAIN ALL COMMON LAW, STATUTORY AND OTHER RESERVED RIGHTS, INCLUDING THE COPYRIGHT THEREIN.



SIGNAGE & PAVEMENT MARKINGS
 STA: 75+50 - 82+50
 1"=30' 0 30'
 NORTH



SIGNAGE & PAVEMENT MARKINGS
 STA: 82+50 - 88+42
 1"=30' 0 30'
 NORTH

SIGNAGE LEGEND

	R1-1 (18" X 18") 2.25 SFT SIGN, TYPE IIIA 14 FT 1-POST, STEEL, 3 LB		R5-3 (24") 4 SFT SIGN, TYPE IIIB 14 FT 1-POST, STEEL, 3 LB
	W5-4a (18" X 18") 2.25 SFT SIGN, TYPE IIIB 12 FT 1-POST, STEEL, 3 LB		W17-1 (30" X 30") 6.25 SFT SIGN, TYPE IIIB 15 FT 1-POST, STEEL, 3 LB
	R3-17aP (24" X 8") 2.5 SFT SIGN, TYPE IIIB		R7-108 (12" X 18") 1.5 SFT SIGN, TYPE IIIA 13 FT 1-POST, STEEL, 3 LB
	R7-8 (12" X 18") 1.5 SFT SIGN, TYPE IIIA 13 FT 1-POST, STEEL, 3 LB		R7-8P (12" X 6") 0.5 SFT SIGN, TYPE IIIA

STRIPING LEGEND

- ① PAVT MRKG, WATERBORNE, 4 INCH, YELLOW (DASHED)
- ② PAVT MRKG, POLYUREA, BIKE THRU ARROW SYM
- ③ PAVT MRKG, WATERBORNE, 12 INCH, WHITE
- ④ PAVT MRKG, WATERBORNE, 24 INCH, STOP BAR
- ⑤ PAVT MRKG, WATERBORNE, 4 INCH, WHITE (SOLID)
- ⑥ PAVT MRKG, WATERBORNE, 24 INCH, CROSSWALK
- ⑦ PAVT MRKG, WATERBORNE, 4 INCH, YELLOW

SHEET QUANTITIES

PAY ITEM	DESCRIPTION	QUANTITY	UNITS
8100371	POST, STEEL, 3 LB	188	FT
8100404	SIGN, TYPE IIIA	19	SFT
8100405	SIGN, TYPE IIIB	38	SFT
8107050	SIGN, WAYFINDING	2	EA
8107050	BOLLARD, SPECIAL	7	EA
8110114	PAVT MRKG, POLYUREA, 24 INCH, STOP BAR	16	FT
8110232	PAVT MRKG, WATERBORNE, 4 INCH, YELLOW	879	FT
8112170	PAVT MRKG, POLYUREA, BIKE THRU ARROW SYM	4	EA
8110231	PAVT MRKG, WATERBORNE, 4 INCH, WHITE	252	FT
8110251	PAVT MRKG, WATERBORNE, 2ND APPLICATION, 4 INCH, WHITE	252	FT
8117001	PAVT MRKG, WATERBORNE, 24 INCH, CROSSWALK	76	FT
8110321	REM CURING COMPOUND, FOR SPEC MRKG	152	SFT

SIGNAGE & PAVEMENT MARKINGS SHEET NOTES

- WAYFINDING SIGNAGE TO FOLLOW TART TRAIL, INC. DESIGN GUIDELINES. SEE SHEET 24 FOR DETAILS.
- ANY ADDITIONAL SIGNAGE THAT NEEDS TO BE ADJUSTED MUST GO THROUGH THE FIELD ENGINEER AND CITY.

BENCHMARKS:

BENCHMARK #6	ELEV. 592.43
TOP OF NW FLANGE BOLT TO HYDRANT UNDER "S" OF 55 N. SIDE OF FRONT STREET ACROSS FROM MCDONALDS & KFC	
BENCHMARK #7	ELEV. 591.38
TOP OF NE FLANGE BOLT OF HYDRANT UNDER "R" OF TRAVERSE NW QUADRANT OF FRONT STREET & HOPE STREET LOCATED IN SUNSET PARK	
BENCHMARK #8	ELEV. 592.34
PAINT SPOT TOP OF NW CORNER OF CONCRETE PAD TO SWITCHGEAR NE QUADRANT OF FRONT STREET & BARLOW STREET	

ISSUANCE & DATE:

DATE: 03/01/2024	PROJECT MANAGER: PCS
PROFESSIONAL: PCS	DRAWN BY: DDS
CHECKED BY: JPM	JOB NUMBER: 7473008

SIGNAGE & PAVEMENT MARKINGS
 STA. 77+50 - STA. 88+42

3/1/2024, 1:56:45 PM
 P:\202403\102\BldgPhase 1 - Street Parks to Senior Center\1 - Signage and Pavement Markings.dwg, unverified
 THIS DOCUMENT HAS BEEN PREPARED BY PROGRESSIVE AE AS AN INSTRUMENT OF SERVICE, AND PROGRESSIVE AE SHALL RETAIN ALL COMMON LAW, STATUTORY AND OTHER RESERVED RIGHTS, INCLUDING THE COPYRIGHT THEREIN.



WAYFINDING SIGN #1
STA 02+00



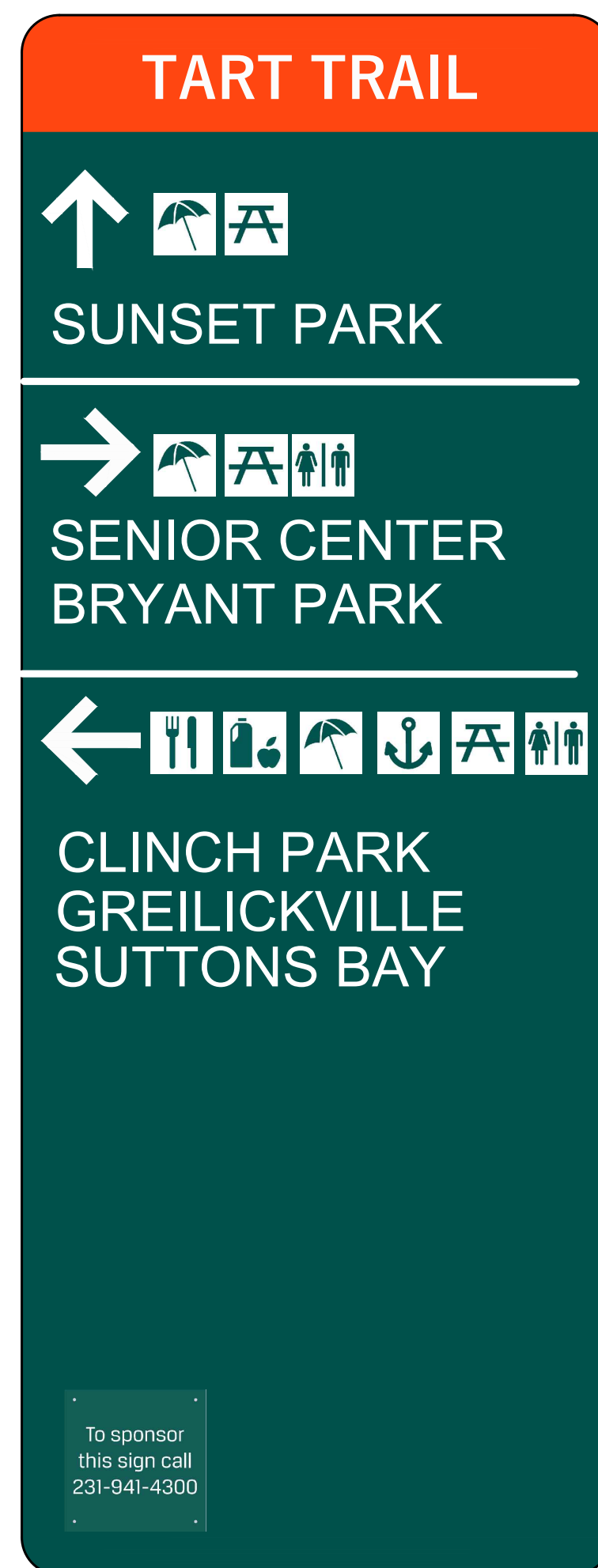
WAYFINDING SIGN #2
STA 211+00



WAYFINDING SIGN #3
STA 215+00



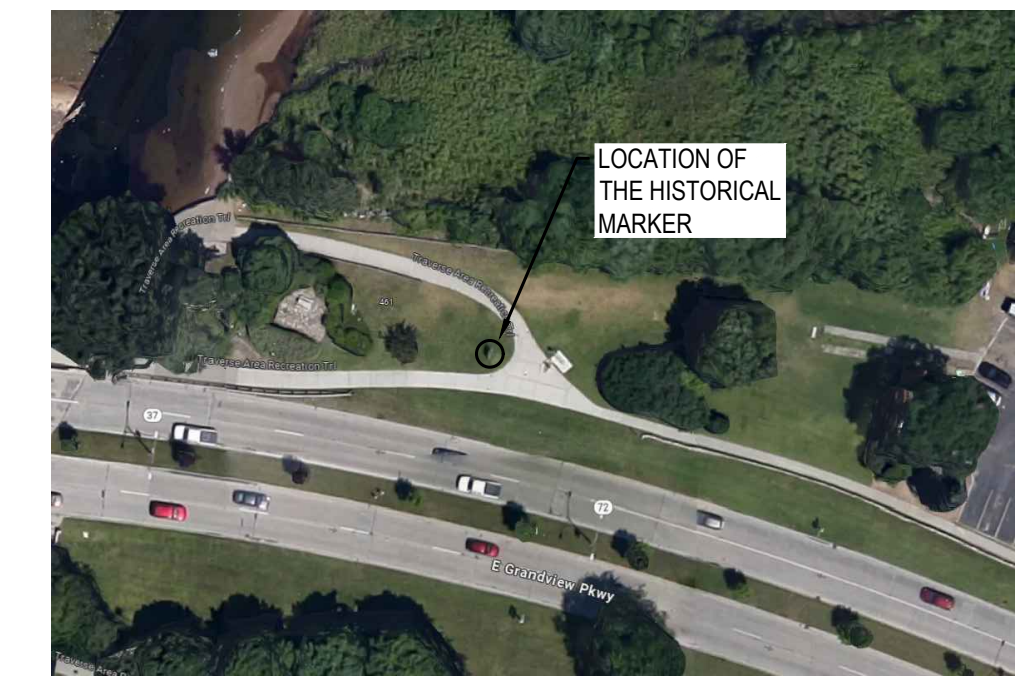
WAYFINDING SIGN #4
STA 50+80



WAYFINDING SIGN #5
STA 77+45



WAYFINDING SIGN #6
STA 83+00



- NOTES:
1. WHEN THE HISTORICAL SIGN IS TO BE REMOVED, CONTACT THE TRAVERSE CITY PARKS DEPARTMENT FOR PICK UP.
 2. FOUNDATIONS ARE TO BE LEFT IN PLACE UNLESS DIRECTED TO BE REMOVED BY THE FIELD ENGINEER.
 3. SIGN WILL BE REPLACED BY OTHERS.

S1 HISTORICAL MARKER REMOVAL AND SALVAGE
NOT TO SCALE

SHEET QUANTITIES

PAY ITEM	DESCRIPTION	QUANTITY	UNITS
810205	SIGN, TYPE V, REM. SALV	1	EA

ISSUANCE & DATE:

DATE: 03/01/2024	PROJECT MANAGER: PCS
PROFESSIONAL: PCS	DRAWN BY: DDS
CHECKED BY: JPM	JOB NUMBER: 7473008

If this document is sealed and signed in a digital or electronic format and is received from someone other than the person who prepared it, you should contact the seal holder to verify the seal. The seal holder is the professional in writing to verify the authenticity of the seal. The seal holder is not responsible for the accuracy of the information provided in this document. The seal holder is not responsible for the accuracy of the information provided in this document. The seal holder is not responsible for the accuracy of the information provided in this document.

SIGNAGE DETAILS

3/1/2024 1:56:46 PM
P:\172008\03\172008\172008\1 - Street Parks to Senior Center\1 - Signage and Permit\Marketing\signage_vanished
THIS DOCUMENT HAS BEEN PREPARED BY PROGRESSIVE AE AS AN INSTRUMENT OF SERVICE, AND PROGRESSIVE AE SHALL RETAIN ALL COMMON LAW, STATUTORY AND OTHER RESERVED RIGHTS, INCLUDING THE COPYRIGHT THEREIN.